

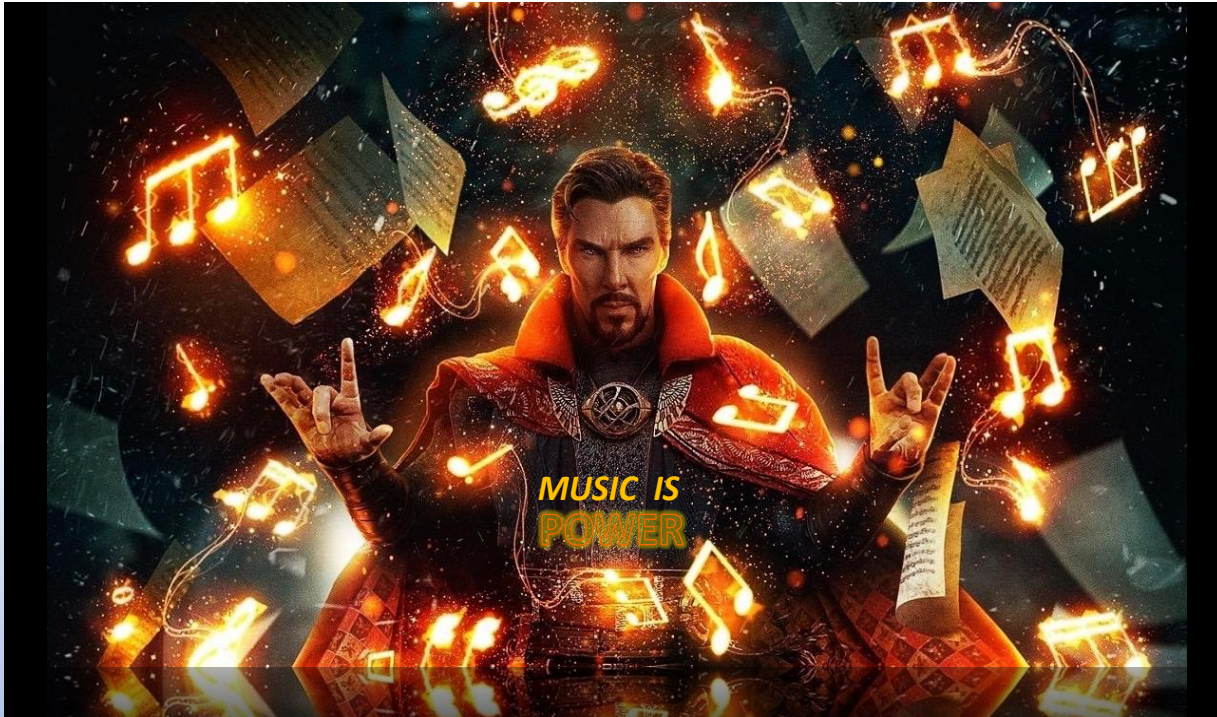
The background of the page is a light gray pattern of various musical symbols, including treble clefs, bass clefs, eighth notes, and sixteenth notes, scattered across the white background.

BAND, ORCHESTRA, AND CHORUS SYLLABUS

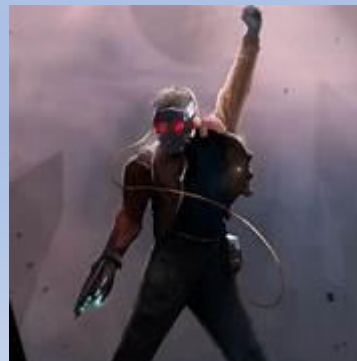
COHEA 2024-2025

Mr. E. Gonzalez

Introduction to Music Class



Welcome to Music Class! We have an exciting school year ahead of us. It is my hope that you will enjoy the experience of learning about and making music. If we all work hard together we can make this a truly memorable year! **Please read the following information carefully with your parent/guardian(s) and complete the Google Form at the end to complete the required signatures.**



School Schedule and Calendar



COHEA
CAREER & COLLEGIATE ACADEMY
FOUNDER OF THE CIVICA NETWORK



2024-2025 Bell Schedule

Early Release

Period 1/2

7:45am - 9:10am

7:45am - 8:45am

Period 3/4

9:15am - 10:40am

8:50am - 9:50am

Period 5/6

10:45am - 1:00pm

9:55am - 10:55am

Period 7/8

1:05pm - 2:30pm

11:00am - 12:00pm

LUNCH SCHEDULE

1ST: 10:45AM-11:15AM

2ND: 11:20AM-11:50AM

3RD: 11:55AM-12:25PM

4TH: 12:30PM-1:00PM

A DAYS - 1, 3, 5, 7

B DAYS - 2, 4, 6, 8

“Bulldogs on the Rise!”



CALENDAR 2024-2025

JULY				
Mo	Tu	We	Th	Fr
1	2	3	4	5
8	9	10	11	12
15	16	17	18	19
22	23	24	25	26
29	30	31		

AUGUST				
Mo	Tu	We	Th	Fr
			1	2
5	6	7	8	9
12	13	14	15	16
19	20	21	22	23
26	27	28	29	30

SEPTEMBER				
Mo	Tu	We	Th	Fr
2	3	4	5	6
9	10	11	12	13
16	17	18	19	20
23	24	25	23	27
30				

OCTOBER				
Mo	Tu	We	Th	Fr
	1	2	3	4
7	8	9	10	11
14	15	16	17	18
21	22	23	24	25
28	29	30	31	

NOVEMBER				
Mo	Tu	We	Th	Fr
				1
4	5	6	7	8
11	12	13	14	15
18	19	20	21	22
25	26	27	28	29

DECEMBER				
Mo	Tu	We	Th	Fr
2	3	4	5	6
9	10	11	12	13
16	17	18	19	20
23	24	25	26	27
30	31			

JANUARY				
Mo	Tu	We	Th	Fr
		1	2	3
6	7	8	9	10
13	14	15	16	17
20	21	22	23	24
27	28	29	30	31

FEBRUARY				
Mo	Tu	We	Th	Fr
3	4	5	6	7
10	11	12	13	14
17	18	19	20	21
24	25	26	27	28

MARCH				
Mo	Tu	We	Th	Fr
3	4	5	6	7
10	11	12	13	14
17	18	19	20	21
24	25	26	27	28
31				

APRIL				
Mo	Tu	We	Th	Fr
	1	2	3	4
7	8	9	10	11
14	15	16	17	18
21	22	23	24	25
28	29	30		

MAY				
Mo	Tu	We	Th	Fr
			1	2
5	6	7	8	9
12	13	14	15	16
19	20	21	22	23
26	27	28	29	30

JUNE				
Mo	Tu	We	Th	Fr
2	3	4	5	6
9	10	11	12	13
16	17	18	19	20
23	24	25	26	27
30				

- Recess Day
- Beg/End Grading Period
- A Day: 1, 3, 5, 7
- Legal Holiday
- New Teachers Report
- B Day: 2, 4, 6, 8
- Early Release Day
- Teacher Planning Day (Opt)
- All Teachers Report
- Teacher Planning Day (Non-Opt)

www.coheaedu.com
2590 W 76 St. Hialeah, FL 33016

Phone: (305) 362-4006
Fax: (305) 362-7006

PARENT'S LINKS



SCAN HERE

TEACHER

EMAIL

ergonzalez@coheaedu.com

Band App

Colegia

GOOGLE CLASSROOM

School Website

<https://www.coheaedu.com>

Remind

COMMUNICATION



Course Description

- ***Singing***
 - ***Playing***-Musical Instruments
 - **Learning**- Musical Literacy: Music History, Theory and Ear- Training
 - **Performing**
-
- Students with little or no singing and instrumental experience develop foundational instrumental and vocal technique, foundational music literacy, and aesthetic musical awareness through rehearsal, performance, and study of high-quality literature. Instrumentalists and Vocalists work on the fundamentals of music notation, sound production, instrument care and maintenance, and personal and group rehearsal strategies.
 - Public performances may serve as a culmination of specific instructional goals. Students may be required to attend and/or participate in rehearsals and performances outside the school day to support, extend, and assess learning in the classroom. This course may also require students to obtain a musical instrument (e.g., borrow, rent, purchase) from an outside source.





Classroom Expectations

- Students are expected to **arrive for class on time.**
- Students are expected to **respect their classroom, equipment and each other.**
- Students are expected to **participate.**
- Students should **ask for permission before using any electronics.**

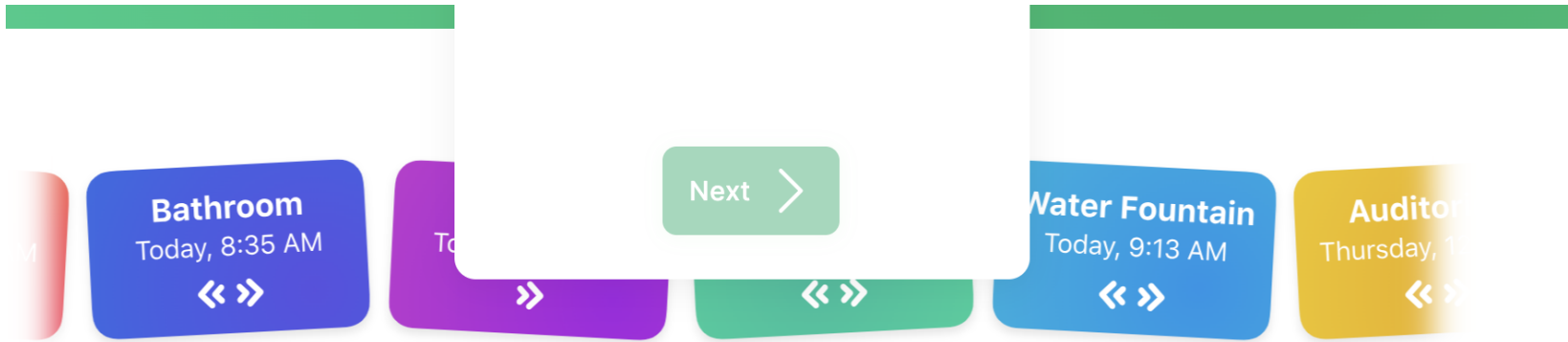
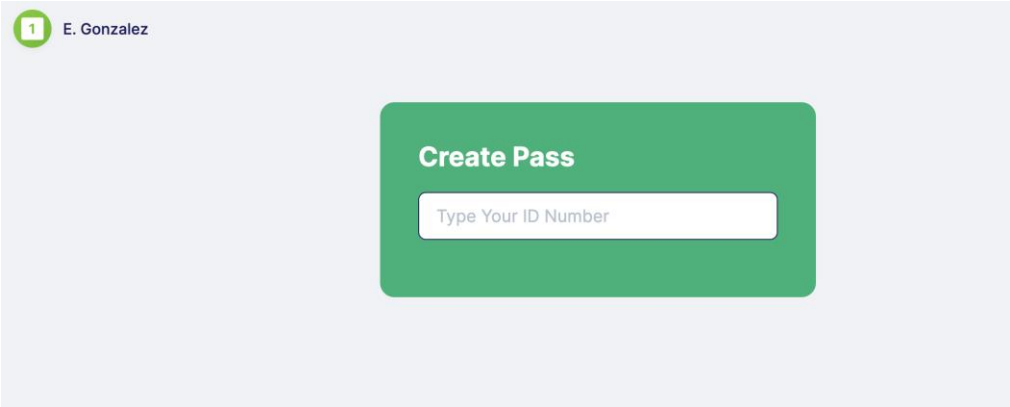
Classroom Procedures

- Enter Class quietly and respectfully.
- Begin to set up your chair and stand (if not already done so)
- Place your music or notebook on the stand.
- Find your instrument and bring it to your where you sit in its case.
- Take out your instrument, tune and warmup until the director tells you to stop.
- Raise your hand to speak or to ask to use the restroom.
- Students now will use the Smart Pass system for Hall Passes

SMART PASS HALL PASS SYSTEM



- 1. ENTER ID
- 2. CHOOSE A HALL PASS

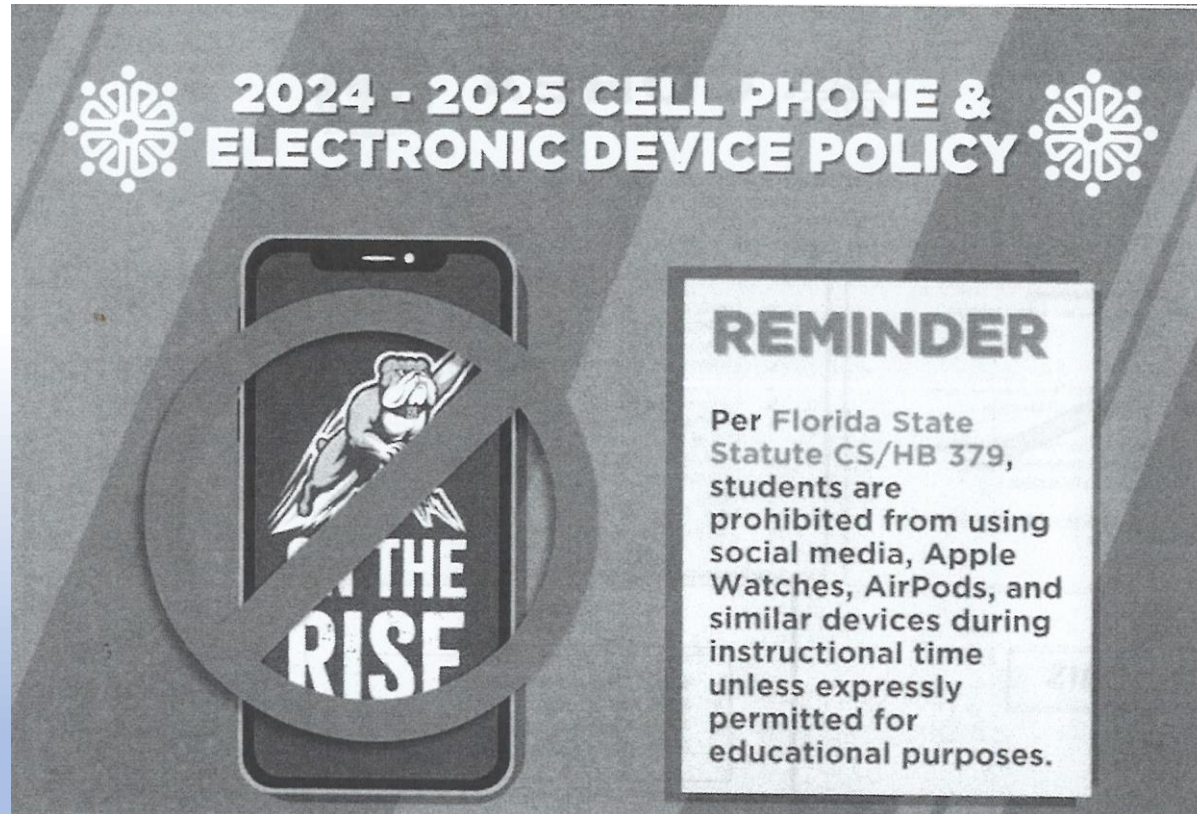


Class Rules


- Respect Your Teacher, Peers and Property
- Follow All Directions
- Raise Your Hand to Speak
- Cell Phones are NOT Allowed Unless Approved by Teacher and must be turned off and placed in Cell Phone Storage Pouch.
- Unless Otherwise Instructed, Be Seated with Your Music Folder and Pencil Before Class Begins.
- The Music Room is to be Kept Clean at All Times.
- Gum, Food, or Drinks Are NOT Allowed in the Music Room unless approved by teacher
- Always follow COHEA's Leadership Foundation: Honor, Respect and Loyalty



2024-2025 Electronic Device Policy

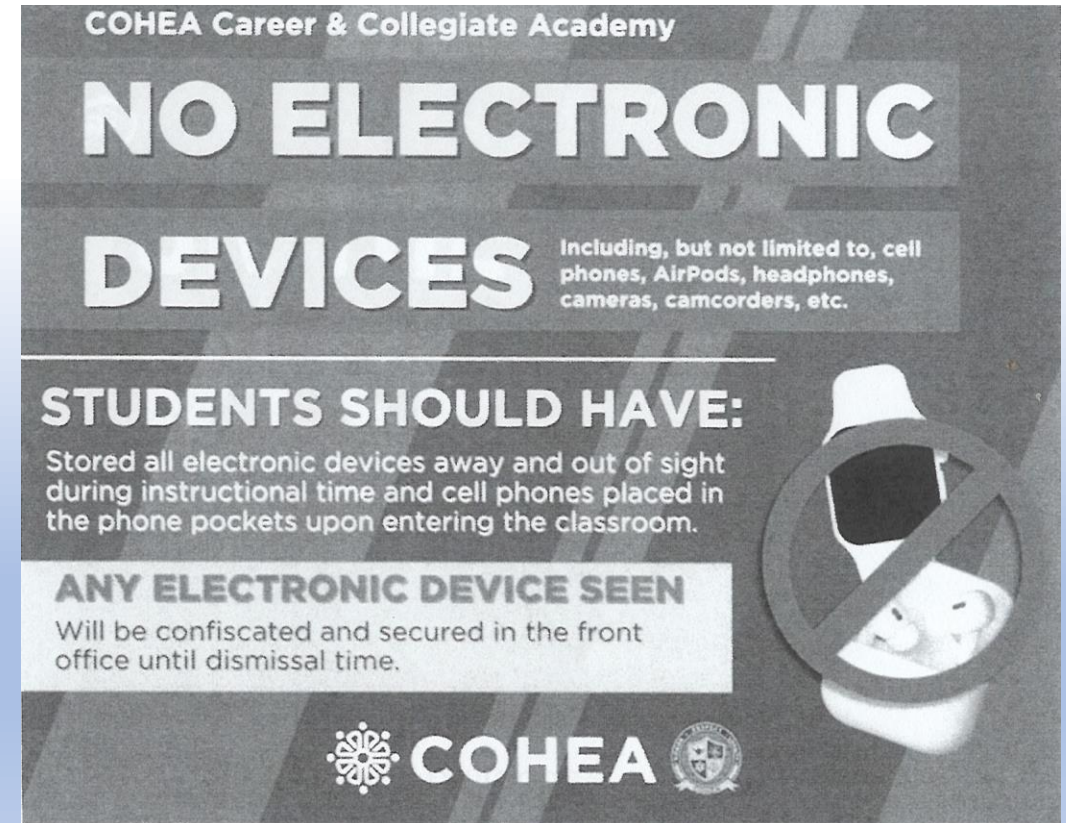


2024 - 2025 CELL PHONE & ELECTRONIC DEVICE POLICY



REMINDER

Per Florida State Statute CS/HB 379, students are prohibited from using social media, Apple Watches, AirPods, and similar devices during instructional time unless expressly permitted for educational purposes.



COHEA Career & Collegiate Academy

NO ELECTRONIC DEVICES


including, but not limited to, cell phones, AirPods, headphones, cameras, camcorders, etc.



STUDENTS SHOULD HAVE:

Stored all electronic devices away and out of sight during instructional time and cell phones placed in the phone pockets upon entering the classroom.

ANY ELECTRONIC DEVICE SEEN

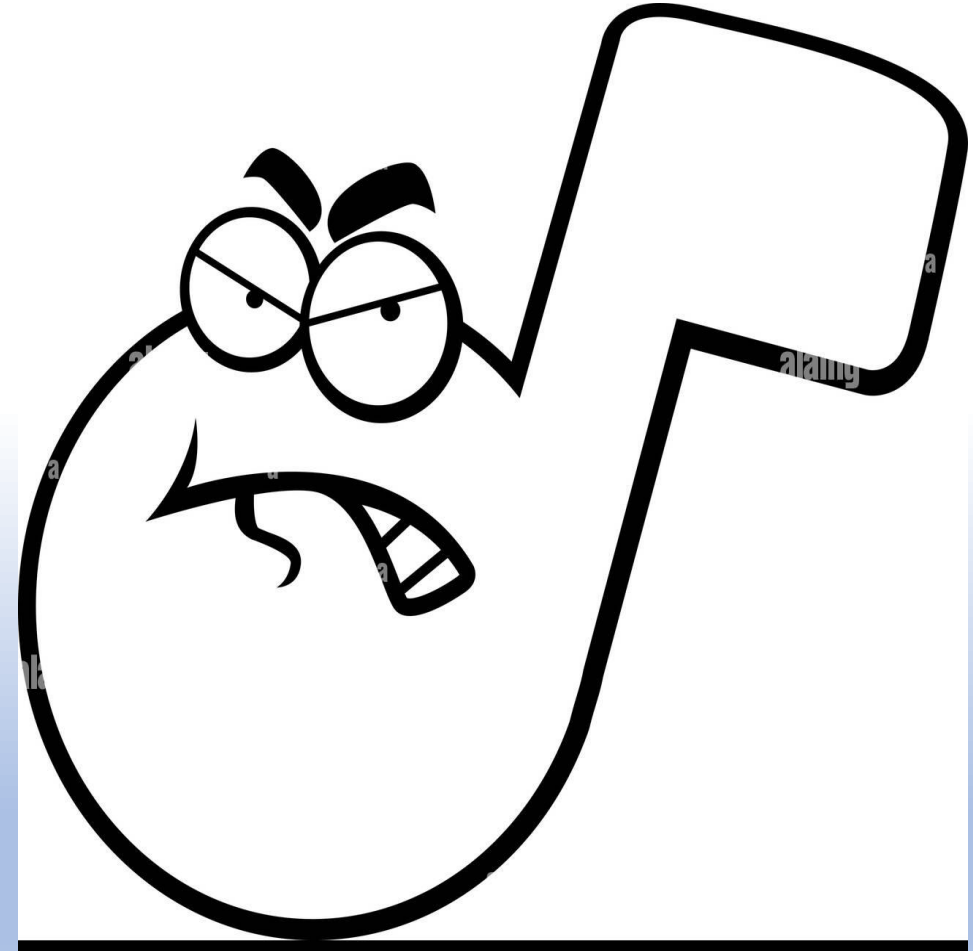
Will be confiscated and secured in the front office until dismissal time.



 **COHEA** 

CONSEQUENCES

- The Teacher will use the HERO system to document **both positive and negative behavior**. It is strongly encouraged for all students and parents monitor their Hero account.
- <https://access.heropowered.com>
- Level 1 infractions- Hero
- For higher level infractions the teacher will refer the student to administration.
- If a student uses their phone or other device in the class without permission, it will be confiscated and will need to be picked up from the administration after school.



GRADING SCALE AND CATEGORIES



- 90-100 = A - 4 points
- 80-89 = B - 3 points
- 70-79 = C - 2 points
- 60-69 = D - 1 point
- 0-59 = F - 0 points

Grade Categories:

- Major Assessments/ Tests: 30%
- Mini- Assessments/ Quizzes: 25%
- Class Learning: 20%
- Home Learning: 5%
- Projects/ Cooperative Presentation/ Essays: 20%
- Total: 100%

ACADEMIC DISHONESTY & ASSIGNMENT SUBMISSION

Academic Dishonesty:

- Cheating is completely UNACCEPTABLE if a student is caught cheating they will receive a Z, a call home will be made and administration will be notified. Plagiarism is also considered cheating

Assignment Submission Guidelines:

- **Format**: Assignments should be typed. They may be handwritten if necessary but must be completely legible.
- **Platform for Submission**: Assignments must be submitted electronically through Google Classroom.

SUPPLY LIST

- *Essential Elements Bk.1 (Orchestra) – Instrument Specific*
- *Tradition of Excellence Bk. 1 (Band) – Instrument Specific*
- *Alfred's Essentials of Music Theory Complete (recommended)*
- 1 inch Binder
- Staff Paper- May be purchased at a music store or online. There are also free downloads of printable staff paper online.
<https://www.blanksheetmusic.net>
<https://makingmusicfun.net/pdf/blanks/BlankStaffPaper.pdf>
- Lined paper
- Pencils
- Dry- Erase Markers

FEEES

Enrichment Fee:

- Each student will be required to pay a **\$20 enrichment fee** for the following school year. This fee will be used to purchase a performance polo, personal music workbooks, sheet music, and accessories needed throughout the year.

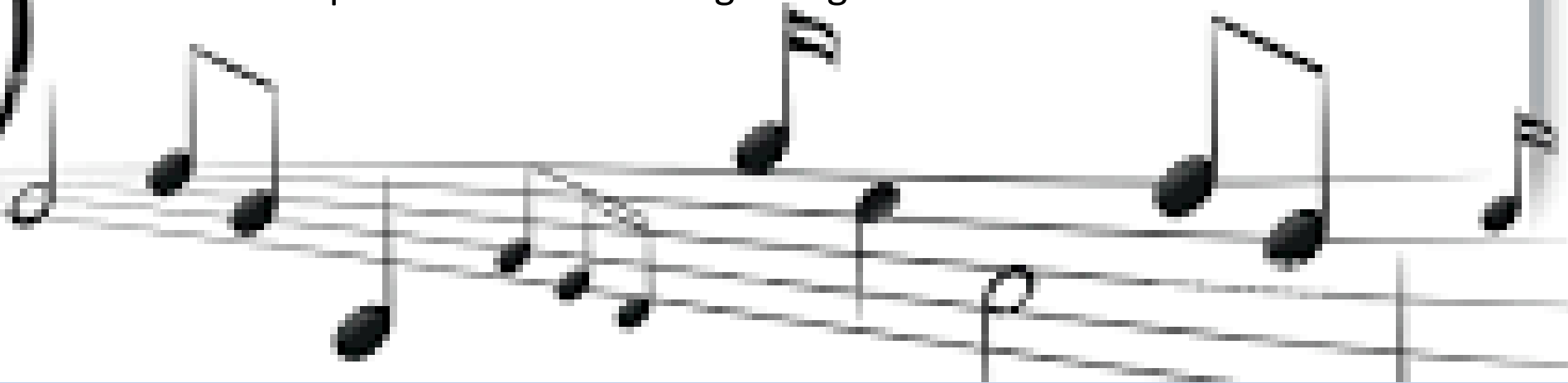
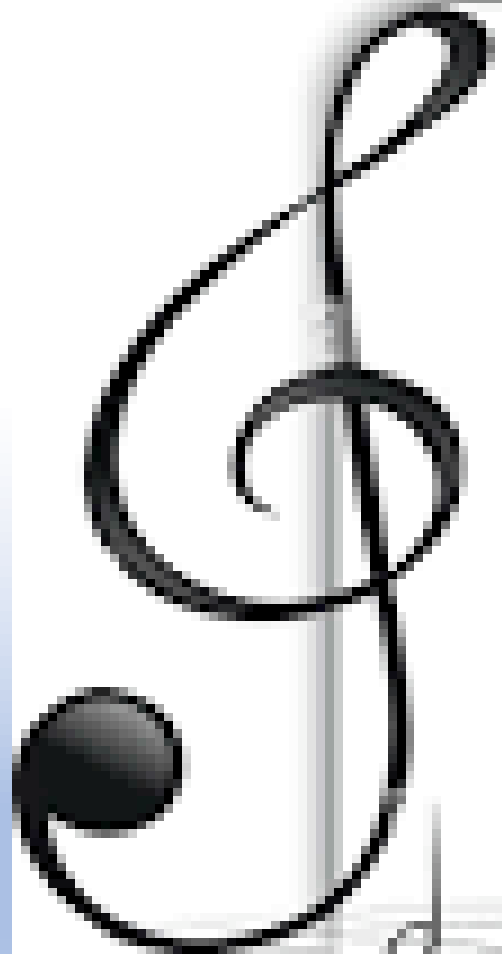
Instrument Rental Fees:

- Students will be required to pay a **\$50 rental fee** to rent the instrument from the COHEA Music Program. This fee does not include accessories such as shoulder rests, extra strings, reeds, valve oil, slide grease, or mouthpieces.
- At the moment COHEA cannot provide instruments for all students. Priority will be given to returning students first.
- New Students will be given a letter to take home to parents that will assist in purchasing and renting instruments from various outside sources.

CONCERT/PERFORMANCE UNIFORM

We will be utilizing the following uniform for our performances this year:

- Concert Performance Polo (comes included with the enrichment fee)
- Black dress pants or black knee length skirt.
- Black dress shoes (boys/girls) Black Flats (girls)
- (NO OPEN-TOED SANDALS OR SNEAKERS)
- Two Inch Heels maximum for girls
- Black socks, hose, or knee highs
- More specific information regarding this will be sent home later.



Concert Dates

- TBA
- Dates Coming Soon!



Concert Attendance Policy

- All students will receive the COHEA Music Program Calendar for the current school year. There are both required and optional performance opportunities. The required events will be for a grade. Excused absences from required performances will be granted only in cases of genuine emergencies or illnesses. In these cases, the director will need to be notified no later than 24 hours by a parent or guardian. A student with an excused absence or a Covid-19 related quarantine or extended illness will be allowed to record a makeup performance or will be given an alternative assignment in order to receive a grade. Failure to attend a concert, sectional, mandatory performance, or mandatory rehearsal will result in a zero for a grade. "I did not have a ride" is NOT an excuse. If you have an unexcused absence for a performance, you will receive a Z for that performance grade.
- Regarding conflicts with athletics: The COHEA music program fully supports the school's athletic program. While the fine arts and athletic department coordinate dates so that students do not have conflicts with scheduling, conflicts will still arise due to rescheduling of athletic events or other factors. Choir and Orchestra students that sign the COHEA Music Contract stating that both student and parent have read this syllabus are agreeing to the terms that a graded performance takes precedence over an athletic event, however exceptions can be made by School Administration where an alternative assignment can be provided by the teacher to make up the grade.
- Please mark these dates on your personal calendars and let me know as soon as possible of any conflicts or concerns. Performance dates are subject to change and as much as possible advance notice will be given of any changes.

SYLLABUS CONTRACT (GOOGLE FORM)

DUE: 8/23/24

Click the link or scan the QR code and fill out with your parents. DUE for a grade by 8/23/24

<https://forms.gle/fmjFZUgQvMtUA8YT8>

